

SAFE JOB SOLUTIONS

*Safety & Environmental
Air Quality
Consultants/Trainers*



Statement of Qualification & Services



Safe Job Solutions, LLC

**Safety & Industrial
Hygiene ▪
Environmental/Indoor Air
Quality ▪ Ergonomics
Consulting ▪ Training**

104 A Franklin Avenue
Spartanburg, SC 29301
&
3712 Ringgold Rd
Chattanooga, TN 37412

Office: 1-888-544-9082 x 101

Mobile: 706-913-6892

Website:

www.safejobsolutions.com



"Focusing on Environmental Health & Safety Compliance and Beyond"

Safe Job Solutions, LLC

We are strategically located in Northwest Georgia/Chattanooga, TN and Spartanburg, South Carolina to effectively serve the south-eastern region and the rest of the United States.



Here at **Safe Job Solutions** we offer proven and effective methods to ensure you a safe, healthy, and productive working and living environment. Please review details of our services and let us know how we can help you.

Safe Job Solutions provides a broad range of environmental, health, and safety consulting services and systems of support to all of our clients.

We also provide the documentation, technical support, and expertise that is fully responsive to our individual client's needs; while effectively considering all regulatory constraints and identifying vital aspects that are critical to successful project completion.

Safe Job Solutions serves the environmental health and safety needs of clients in South Carolina, Georgia, North Carolina, Alabama, Tennessee, and throughout the United States. Our staff includes highly trained and experienced individuals including:

- Certified Industrial Hygienist (CIH), Registered Professional Industrial Hygienist (RPIH)
- Industrial Hygienist, Safety Professionals, Certified Mold Inspector (CMI)
- Environmental Specialist, Registered Nurse, Certified Ergonomic Assessment Specialist (CEAS)
- Professional Engineer (PE), Consultants, and Trainers
- Certified CPR/AED & First Aid Instructors (American Heart Association and Red Cross)



"Focusing on Environmental Health & Safety Compliance and Beyond"



"Our goal is to deliver an affordable customized and flexible service package that will help you to achieve superior results." We bring a broad scope of environmental, health, and safety services and capabilities to our clients. Our clients rely on us to assist them with responsive technical expertise and to develop the most feasible and cost effective solutions for their projects.

Our company is based on the belief that our customers' needs are of the utmost importance. Our entire team is committed to meeting those needs. As a result, a high percentage of our business is from repeat customers and referrals.

We would welcome the opportunity to earn your trust and deliver you the best service in the industry.

***Call us Today for your FREE initial
On-site Assessment & Consultation!***

and

FREE Area Noise Survey!

(Using a Sound Level Meter)

What are Sound Level Meters?

Sound level meters are instruments designed to react to noise much like the human ear.

The measurements taken by sound level meters are compared to known standards to identify whether the noise level could have a detrimental effect on humans located near the noise source.



"Focusing on Environmental Health & Safety Compliance and Beyond"

At **Safe Job Solutions**, our mission is to be the leading provider of high quality environmental, health, industrial hygiene, and safety services to meet the special needs of our clients. We work with employers and homeowners to find practical solutions to prevent illnesses and injuries related to their environment.



We can identify potential risks and compliance needs and determine preventative measures; in order to solve environmental, health and safety related problems and work to improve conditions in your manufacturing facility, medical/healthcare, environment, office, or in your home.

We Have Serviced All Types of Industries Such As:

Pharmaceutical Plants

Automotive Industry

Food/Meat Processing

Forestry and Wood Products

Metal Finishing

Nuclear Plants

Fiberglass Boat Mfg

Building Products

Metal Fabrication

Plastic Recycle Plant

Textile Industry

Coal Burning Plants

Corrugated/Fiberboard Plants

Hospital and Healthcare

Fiber Optics

Telecommunications

Aerospace Industry

Computer Manufacturers

Carpet, Tile/Hardwood Flooring

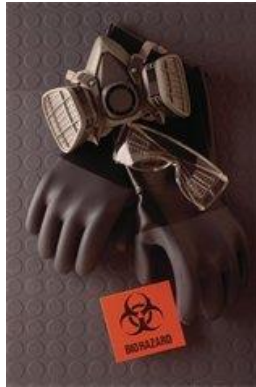
Blow Mold Industry

Federal Gov. (FAA and NIOSH)



"Focusing on Environmental Health & Safety Compliance and Beyond"

Safety Program/Safety Manual Development



SJS Safety Professionals can partner with your organization to develop required written health and safety programs. Our occupational health and safety professionals can help customize a program for you that it is practical and cost-effective for your organization and that meets the requirements of local, state and federal regulatory agencies. Our programs are designed and written to meet your operations' specific needs.

The development of a documented and effectively implemented health and safety program is critical to the success your safety program. OSHA requires such a program for many organizations; for others it may be part of the overall management system to:

- protect employees from workplace related injuries and illnesses
- to reduce the costs associated with those injuries and illnesses
- to improve employee morale and productivity

Site Safety & Health Plans - Safety and health plans that may be required for your facility include OSHA lockout / tagout procedures, bloodborne pathogen protection, respiratory protection, hearing conservation, personal protective equipment, confined space entry, emergency and fire prevention, and many others. These plans are necessary to protect the health and safety of personnel who may come into contact with hazardous waste or other hazardous



"Focusing on Environmental Health & Safety Compliance and Beyond"

substances.

We will assist you in collecting background information about your site and the chemicals potentially involved to develop plans that meet all applicable regulatory requirements.

Examples of Programs:

Hazard Communication Written Program - Lack of a written hazard communication program is one of the most frequently cited OSHA violations. If your employees are exposed to OSHA hazardous chemicals, a hazcom plan is mandatory. Safe Job Solutions can compile your labeling, MSDS, employee information and training, hazwoper training, and contractor information programs into an effective written plan. If you don't have these programs already, we can develop them for you.

Employee Emergency and Fire Prevention Plans

We will examine your facility, assess potential emergency situations, and prepare plans that will ensure employee safety in an emergency or fire in accordance with applicable regulations [29 CFR 1910.38].

Certified Hazardous Assessments

Written Hazardous Assessments point out potentially dangerous situations and controls them before an accident occurs, especially those dangers present in routine work. They also influence many aspects of workplace safety.

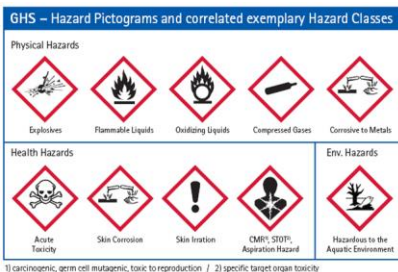
According to the revised "General Requirements" under CFR 1910.132 personal protective equipment, the employer must document and verify that a certified hazard assessment has been performed through a written certification that identifies the workplace evaluated, the person certifying that the evaluation has been performed, and the date of the assessment. This assessment must identify the hazards to the employees, relating to their jobs, tasks, operations or equipment use, the body part affected by the hazards, and the suggested personal protective equipment to use. We can provide you with this certified written document.

On Site Safety Meetings

Our safety meetings are structured to suit your particular industry, current



“Focusing on Environmental Health & Safety Compliance and Beyond”



operation, or any particular safety topic you may desire. The meetings will be designed and delivered to instruct your employees on how to perform jobs productively, efficiently, and safely. They will address the particular hazard recognition and control procedures as well as the use of required personal protective equipment.

These meetings can be conducted at your workplace, or the job site. The meetings can be held anytime and anywhere.

[GHS \(Material\) Safety Data Sheet Authoring/Development](#)

Safe Job Solution’s staff develops material safety data sheets (MSDS’s) designed to meet OSHA requirements while effectively protecting the health and safety of workers who use hazardous chemicals. We strive to ensure that your MSDS’s are complete, technically accurate, and in language that the target audience can understand. We generate MSDS’s using the ANSI 16-part format and following the Global Harmonization System (GHS), and we will be happy to create MSDS’s to suit your needs.

[In-House Training](#)

Qualified Instructors & Training

[Training Matrix/Documentation](#)

We also provide our clients with a computerized Training Matrix listing their employees and the training received on a given date. This single document makes it easier for you to visualize at a glance who has had, or who needs training. This report is upgraded to reflect both new employees as well as the deletion of employees who have left.



"Focusing on Environmental Health & Safety Compliance and Beyond"

OSHA Compliance Inspection and Audits



A representative from SJS will visit your site and conduct a full-scale, Mock-OSHA focused inspection. The purpose of these inspections and audits are to identify areas of non-compliance along with identifying gaps in your company's safety programs. An independent safety audit often uncovers hazards and other items that your company would never have noticed until an actual OSHA inspection occurred or an employee was seriously or fatally injured. Our OSHA-like inspection and audit will be tailored to your specific job-site. We will evaluate the type of work you perform and assess for non-compliance issues. A full written report will be issued accompanied by pictures. Utilizing these services, many of our customers have requested our inspection services periodically in an effort to ensure compliance with OSHA and to protect their employees.





"Focusing on Environmental Health & Safety Compliance and Beyond"

Safety Program-Training, Review and Development

Our Qualified instructors are ready to serve you in any of the following areas:

- Accident Investigation
- Asbestos Awareness
- Bloodborne Pathogens
- Compressed Gases and Hazardous Materials
- Confined Space Entry
- CPR/First Aid
- Crane, Hoist & Sling Inspection
- Cutting, Brazing & Welding
- Electrical Safety
- NFPA 70E Compliant
- Emergency Action Plan
- Ergonomics Program
- Exposure Assessment/Software
- Expert Witness
- Fall Protection
- Fire Prevention/ Fire Extinguisher
- Fire Prevention
- Hazard Communication
- Hexavalent Chromium
- Industrial Hygiene
- Incentive Programs
- Job Hazard (Safety) Analysis
- Lead Safety Training
- Lockout/Tagout
- Machine Guarding
- Material Handling
- MSDS Software
- New Employee Orientation
- Personal Protective Equipment
- PPE Hazard Assessment
- Powered Industrial Truck
- Respirator Training and Fit Testing
- Spill Containment
- Trenching & Excavating
- Workplace Violence
- **AND MORE.....**



"Focusing on Environmental Health & Safety Compliance and Beyond"

Behavior-Based Safety (BBS)

What is BBS?

Behavior-based safety (BBS) is the "application of science of behavior change to real world problems." BBS "focuses on what people do, analyzes why they do it, and then applies a research-supported intervention strategy to improve what people do." At its very core BBS is based on a larger scientific field called [Organizational Behavior](#) Analysis.

To be successful a BBS program must include all employees. This includes the CEO to the floor associates. To achieve changes in behavior a change in policy, procedures and, or systems most assuredly will also need some change. Those changes cannot be done without buy-in and support from all involved in making those decisions.

BBS is not based on assumptions, personal feeling, and/or [common knowledge](#). To be successful, the BBS program used must be based on [scientific knowledge](#).

A good BBS program will consist of:

- Common goals — Both employee and managerial involvement in the process
- Definition of what is expected — Specifications of target behaviors derived from safety assessments
- Observational data collection
- Decisions about how best to proceed based on those data
- Feedback to associates being observed
- Review



"Focusing on Environmental Health & Safety Compliance and Beyond"



All of the BBS programs reviewed included multilevel teams. Some programs use them in the assessment phase, some in observation and some in review. Some had all three areas using multilevel teams.

Behavior-based safety is founded on the principles of behavior science, i.e.

- **People do what they do because of consequences**
- **People do what is reinforced**
- **Positive reinforcement is more effective than negative reinforcement**

It is intended as a resource for understanding best practices, which can assist supervisors and employees in implementing and or improving BBS. Research has shown that, as safe behaviors increase, safety incidents decrease. Measurement of "percent safe acts" is a leading safety indicator. In contrast, most safety measures are lagging measures, which are recorded after the incident (e.g., OSHA recordable cases). A good safety plan is measured by how effectively accident rates are reduced or controlled. A proactive mentality is required for a safety plan to meet or exceed goals in accident prevention and or reduction. This plan represents this philosophy.

Site Readiness Assessment

A readiness assessment is a study of a site to determine to what extent the site is ready to do BBS. It includes interviews with key personnel and groups of workers, perception surveys, site observations, and a review of safety documentation including accident investigation reports. The purpose of this data is to help determine what factors would facilitate BBS, what factors would challenge BBS, and to develop a site-specific plan to proceed with implementation. The assessment can also discover the few factors that make BBS virtually impossible so that the site can better prepare or look for alternatives.



"Focusing on Environmental Health & Safety Compliance and Beyond"



Who should use it:

Every company who is trying BBS for the first time should perform an assessment. Sites that are vastly different from other sites that have previously been assessed should also perform assessments.

Consulting

Fully-Supported Implementation

The fully-supported implementation is a full-scale Behavior-Based Safety implementation in which a SJS consultant works in cooperation with site employees to design, train and implement the BBS process at the site. SJS will work with all site personnel and carefully consider all site documentation to determine the best way to make BBS fit the site and integrate into existing safety efforts.

Each fully-supported implementation includes:

- Strategic Planning
- Manager Briefings
- Supervisor Support Training
- Site Leadership Team Training
- Observer Training
- Employee Briefings
- Kickoff Activities
- Data Analysis and Problem-Solving Training
- Long-term Process Maintenance
- Follow-up Audits and Training as needed

Who Should Use It:

This approach is best for companies with limited internal resources for training, a rushed implementation schedule or companies who choose to outsource such activities.



"Focusing on Environmental Health & Safety Compliance and Beyond"

Industrial Hygiene Services



What is Industrial Hygiene? "that science or art devoted to the anticipation, recognition, evaluation, and control of those environmental factors or stresses, arising in or from the workplace, which may cause sickness, impaired health and well-being, or significant discomfort and inefficiency among workers."

We know certain chemicals cause problems in the workplace. The issues now are: Where do they occur in the workplace? How can we best evaluate them? What are the procedures for dealing with them safely?

Air sampling, wipe, tape, vacuum swab, noise, non-ionizing radiation, sampling and other Industrial Hygiene monitoring gives you a baseline or assessment of exposure to particular hazards from start to finish. SJS can emphasize an interdisciplinary approach to understanding how air monitoring can adequately report current environmental conditions associated with outdoor media, indoor remediation efforts, proximal equipment, interior line monitoring, and the interrelationship of ventilation parameters.

In addition to providing sampling, we can help with the basics of exposure assessments dealing with:

- **chemical risk assessment**
- **biological assessment**
- **engineering evaluation of mechanical system design criteria**
- **chemical or process engineering hazard assessments**



“Focusing on Environmental Health & Safety Compliance and Beyond”



Chemical /Particulate Hazards

Name	Description	Examples
Particulates	non respirable particles ≥ 10 mm in diameter • respirable particles < 10 mm in diameter	dusts, fumes, mists, and fibers
Dust	volatilized solids condenses in cool air • < 1.0 mm in diameter • hot vapor + air (reaction with) = oxide	cotton dust, powder, fly ash, crystalline silica
Fumes		metal fumes, welding fumes, exhaust fumes
Mists	suspended solid droplets • generated by a condensation of liquids from vapors to a liquid state	metal working fluids, oil mists
Fibers	solid, slender, elongated structures • length several times the diameter	insulation fibers, mineral wool, glass refractory, asbestos
Gases	formless fluids that expand to occupy a space • arc-welding, internal combustion engine exhaust air	carbon monoxide, ethylene oxide, hydrogen, methane
Vapors	liquid changed to vapor • organic solvents	paint thinner, mineral spirits, degreasers, paint



"Focusing on Environmental Health & Safety Compliance and Beyond"



Physical hazards



- Non-ionizing (Radio Frequency, Electromagnetic Fields, MRI)
- Noise-Hearing Conservation Program/Annual Hearing Test/Noise Area and Personal Monitoring with noise dosimeters and sound level meters
- Vibration
- Lighting Surveys for Office, Industrial facilities and Parking Lots
- Extreme temperatures (Heat and Cold Stress)

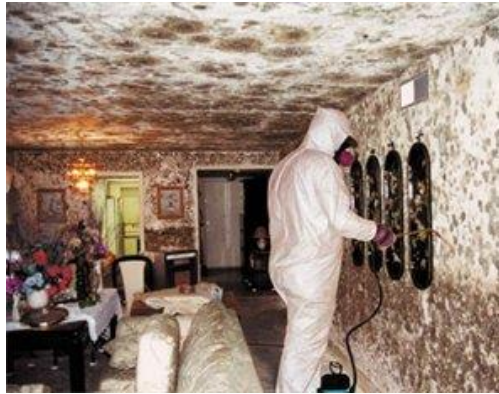
Ergonomic Hazards

- **Assessments**
- **Training**
- **Program Development**
- **Office/Workstation design**
- **Repetitive motion**



"Focusing on Environmental Health & Safety Compliance and Beyond"

Indoor Air Quality



Why monitor Indoor Air Quality?

We monitor indoor air quality because we spend approximately 90% of our time breathing "indoor air". Unlike outdoor air, indoor air is recycled over and over causing it to trap and build up pollutants. Poor indoor air quality contributes to both short and long term health issues which can lead to decreased productivity, absenteeism, and possible litigation.

Typical symptoms associated with poor indoor air quality include eye, nose, and throat irritation, headache, nausea, dizziness, and fatigue. In some cases exposure can lead to building related illnesses including asthma, hypersensitivity pneumonitis, Legionnaires' disease, and humidifier fever.

The good news is that many of these symptoms can be alleviated by properly identifying and eliminating the offending sources.



"Focusing on Environmental Health & Safety Compliance and Beyond"



What factors contribute to "Poor" Indoor Air Quality?

Gas and particulates in the air are the primary sources that contribute to poor indoor air quality. These sources can include faulty HVAC, building materials, carpeting, pressed wood furniture, maintenance products, solvents, cleaning supplies, etc. The actual concentrations of these pollutants can also be amplified by other external factors including poor ventilation, humidity, and temperature.

Some indoor air quality issues are easy to identify and resolve with a simple walkthrough, while other cases might require more in depth analysis.

It doesn't matter whether your indoor air quality issues are simple or complex, SJS can monitor to you to identify and ultimately resolve your indoor air quality issues.

Mold	Food/Non Food Contact Surface	Allergen
Fibers	Water Sampling-E. Coli	Latex Protein
Fungi	Sewage Contamination	Cat/Dog Dander
Bacteria	Legionella	Cockroach/Dust Mites
Viruses	MRSA -Staph	Mouse/Rat
Asbestos/Lead	Endotoxin	Formaldehyde

Air Quality Complaint Investigations

Air Quality Sampling

Legionella/Mold Investigations

Sewage Contamination

Radon/Asbestos Sampling



"Focusing on Environmental Health & Safety Compliance and Beyond"

Environmental Compliance



SJS can provide your organization with the technical expertise needed to remain in accordance with Local, State, and Federal-Environmental Protection Agency (EPA) regulations, as well as any precautions you may want to make to ensure a safe environment. Please review the environmental services that we provide.



Call us Today and we can conduct an Internal Environmental Audit on the following:

Environmental Site Assessment Phase 1 (Phase 1 ESA)

We can conduct this due diligence prior to the purchase of a commercial or industrial property. The due diligence process for a property transfer provides some assurance that an environmental professional assessed the issues associated with possible contamination on a site. Safe Job Solutions uses ASTM International developed procedure that standardized the Phase I Environmental Site Assessment process.

Waste Management

Solid Waste

Non-Hazardous Waste

Universal Waste: waste that are generated by a wide variety of people that contain mercury, lead, cadmium, and other substances hazardous to human and environmental health.

Hazardous Waste



"Focusing on Environmental Health & Safety Compliance and Beyond"

Storm Water Pollution Prevention Plans (SWPPP)

Safe Job Solutions will determine if your facility needs a storm water permit and storm water pollution prevention plan. We will identify sources of storm water pollutants monitoring and sampling requirements and document best management practices applicable to your facility. We can also help you determine if you qualify for a certification of no exposure. Each industrial or manufacturing facility must either obtain a Stormwater Permit or submit a "No Exposure Certification."

- Create Stormwater Pollution Prevention Plan (SWP3)
- Conduct Internal Plan Audit to prepare you for EPA, State or Corporate Audits
- Conduct Monthly SWP3 Audits
- Company Training for Employees and Management
- Best Management Practices (BMP's)



Spill Pollution Control and Countermeasures Plan (SPCC)

Most facilities that store 1,320 gallons or more of petroleum or non-petroleum oils are required to have written SPCC

plans. Safe Job Solutions can prepare your SPCC plan or update an existing plan to keep you in compliance with all federal, state and local regulations.

- Create SPCC Plan
- Conduct SPCC Internal Audit to prepare you for EPA, State or Corporate Audits
- Conduct Monthly SPCC Audits
- Spill Prevention and Response Postings
- Company Training for Employees and Management
- Best Management Practices (BMP's)





"Focusing on Environmental Health & Safety Compliance and Beyond"

Health Care/Hospital/Lab Services

We can identify potential risks and compliance needs and determine preventative measures; in order to solve environmental, health and safety related problems. We will work to improve conditions in your hospitals, clinics, laboratories, surgery centers, nursing homes and private practices (dental/medical) office.



Safe Job Solutions can provide professional, on-site testing and certification services for Chemical Fume Hoods and Biological Safety Cabinets.

Example of a Chemical Fume Hoods Schedule:

- Inflow face velocity profile test
- Smoke test

Safe Job Solutions issue a fully documented test report and Certificate of Compliance that includes details of the test procedures and equipment (and its calibration reference) used analysis of test data and the nature of any repairs and/or adjustments made to the equipment. Where appropriate we also report any recommendations we may have for future action. Any replacement parts installed during the testing process are selected to be at least equivalent to those specified for the original installation.

Test programs are tailored to suit client's individual requirements.



"Focusing on Environmental Health & Safety Compliance and Beyond"

Healthcare Air Monitoring and Services



Anesthetic Gas Monitoring	Isopropyl Alcohol Surveys
Asbestos Sampling Surveys	Lead Surveys
Badge Monitoring Programs	Legionella Testing
Badge Monitoring Programs	Magnetic Field Testing
Benzene Surveys	Mercury Testing
Biological Contaminant	MSDS Management Systems
Cadmium Surveys	Noise Surveys
Ethylene Oxide Monitoring	Oncology Lead/Cadmium
Formaldehyde Monitoring	Respirator Fit Testing and Certification
Glutaraldehyde Monitoring	Toluene Surveys
Indoor Air Quality Studies	Waste Anesthetic Gas Monitoring
Chemical Fume Hood Testing	
Chemical Fume Hood Certification	Xylene Monitoring



"Focusing on Environmental Health & Safety Compliance and Beyond"

CPR/AED & First Aid Training



Safe Job Solutions serves the health and safety needs of clients in Georgia, Tennessee, Alabama, South/North Carolina and throughout the United States. Our classes are truly fun and informative you will leave feeling confident in the skills you have required.



SJS, is here to serve the needs of the community. It is our mission to reach and teach important lifesaving skills also to promote health and safety to health care providers and the community as a whole. We accomplish this mission by providing experienced instructors in CPR/AED and First Aid Training; certified from the American Heart Association and the American Red Cross. CPR Saves!



We teach both American Heart Association and American Red Cross CPR/AED and First Aid Classes.

Our instructors teach full time.

Instructors are certified by The American Heart Association (AHA)

Student books are free of charge (loaned) or can be purchased.



"Focusing on Environmental Health & Safety Compliance and Beyond"

AHA Certification cards are valid for 2 years.

We teach classes at your location or ours.

All Certifications are valid for two years.

You save time and money. By creating a safer workplace, you avoid fines for non-compliance to OSHA's General Industry Standards (Part 1910) Title 29 and the Code for Federal Regulations and lower workers compensation costs.

We Can teach where you are or where we are located.



AHA Classes

- ⊕ BLS Healthcare Provider
- ⊕ Renewal BLS Healthcare Provider
- ⊕ Heartsaver CPR/AED with First Aid
- ⊕ Heartsaver CPR/AED
- ⊕ Heartsaver First Aid
- ⊕ Bloodborne Pathogens



"Focusing on Environmental Health & Safety Compliance and Beyond"

Professional References

1. Spartanburg Regional Healthcare Systems
101 Eastwood St
Spartanburg, South Carolina 29301
Mike Miller, Environment of Care Manager
Jeff Straub, Emergency Planning Manager
(864) 809-9299
2. Spartanburg Regional Healthcare Systems
101 Eastwood St
Spartanburg, South Carolina 29301
DJ Neubauer, Safety Specialist
(864) 560-7589
3. Honeywell International, Inc.
400 S. Buncombe Rd
Greer, South Carolina
Robert Pendry, Environmental Health and Safety Manager
(864) 989-3700 or (864) 304-5473
4. Draka Comteq
Claremont, North Carolina
Rick Miller, Environmental Health and Safety Manager
(828) 455-3441
5. PenGulf, Inc
Charleston, Tennessee
Chris Shelton, Corporate Safety Manager
(423) 336-5455
Mike Guzetti, Safety Leadman
(423) 718-8785
6. Peter Cutt
President
IMACC Corporation
Dalton, GA
(706) 463-3030